



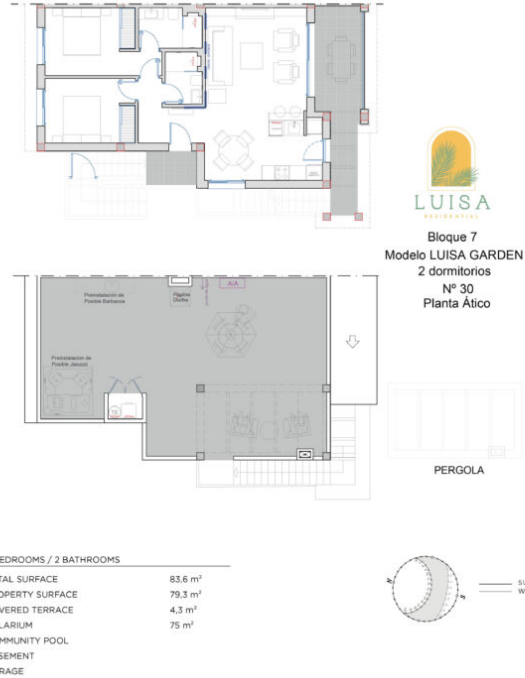
LUISA RESIDENTIAL - GENERAL PLAN



Property information may be subject to errors and is not contractual. The surfaces expressed are approximate, being able to undergo modifications for technical reasons. Artistic Images Free Of Contractual Nature.



LUISA RESIDENTIAL - 30 LUISA ATICO



Property information may be subject to errors and is not contractual. The surfaces expressed are approximate, being able to undergo modifications for technical reasons. Artistic Images Free Of Contractual Nature.



Urbanización Doña Pepa · Avda. Antonio Quesada, nº59 · 03170 Rojales (Alicante - España)

2 dormitorios / 2 baños

Superficie total: 83,6 m²

Superficie cubierta: 79,3 m²

Superficie solarium: 75 m²

Superficie terraza: 4,3 m²

www.euromarina.com

Urbanización Doña Pepa · Avda. Antonio Quesada, nº59 · 03170 Rojales (Alicante - España)

03170 Rojales (Alicante - España)

