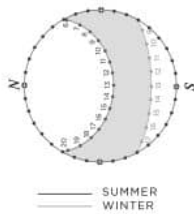
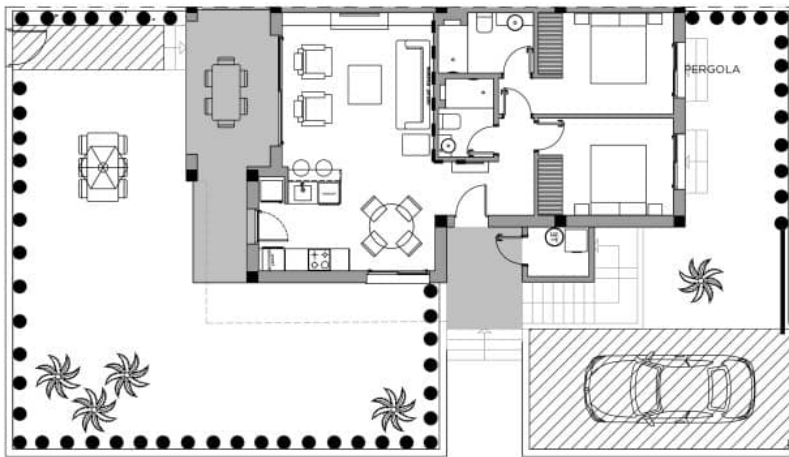


MARELLA GARDEN - MODEL LISA GARDEN

GROUND FLOOR



2 BEDROOMS / 2 BATHROOMS

TOTAL SURFACE	90.5 M2
PROPERTY SURFACE	83.25 M2
COVERED TERRACE	7.25 M2
GARDEN	130 M2
PARKING SPACE	

Property information may be subject to errors and is not contractual. The surfaces expressed are approximate, being able to undergo modifications for technical reasons. Artistic Images Free Of Contractual Nature.

www.euromarina.com

Urbanización Doña Pepa · Avda. Antonio Quesada, nº59 · 03170 Rojales (Alicante - España)





Marella Garden Ciudad Quesada

Lisa 2 2

Lisa

Marella Garden Ciudad Quesada 10



	90.5 m ²		2
	83.25 m ²		2
	7.25 m ²		1
Superficie pérgolas	0 m ²	Pérgolas	0
	m ²		√
	75 m ²		1
	m ²		√
	m ²		√
			X

