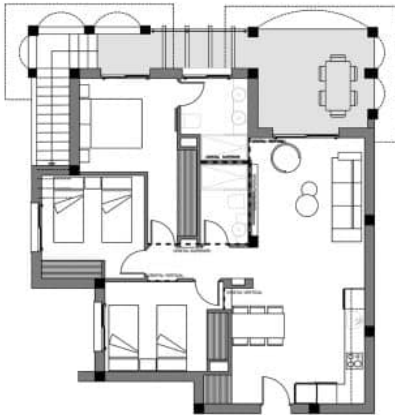
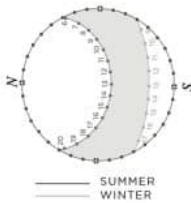
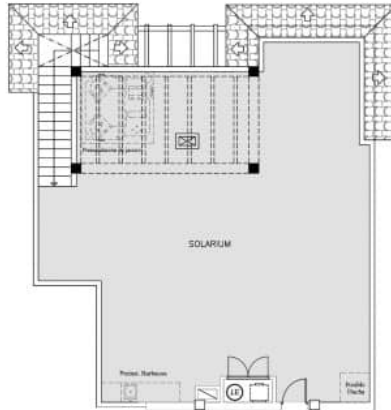


ENORA GARDEN RESIDENTIAL - MODEL JAZMIN PENTHOUSE 'A'

FIRST FLOOR



SOLARIUM



3 BEDROOMS / 2 BATHROOMS

| | |
|-----------------------|-----------|
| TOTAL SURFACE | 112.42 M2 |
| PROPERTY SURFACE | 100.62 M2 |
| COVERED TERRACE | 6.6 M2 |
| UNCOVERED TERRACE | 5.2 M2 |
| SOLARIUM | 96 M2 |
| PRIVATE PARKING SPACE | |
| STORAGE ROOM | |

Property information may be subject to errors and is not contractual. The surfaces expressed are approximate, being able to undergo modifications for technical reasons. Artistic Images Free Of Contractual Nature.

www.euromarina.com

Urbanización Doña Pepa · Avda. Antonio Quesada, nº59 · 03170 Rojales (Alicante - España)



