



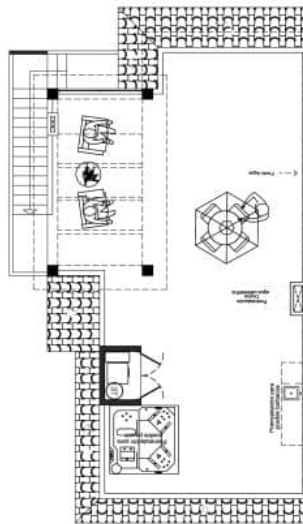


MARELLA GARDEN - MODEL LISA PENTHOUSE

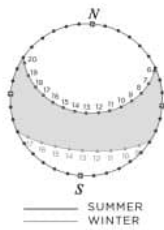
FIRST FLOOR



SOLARIUM



PERGOLA



2 BEDROOMS / 2 BATHROOMS

TOTAL SURFACE	88.9 M2
PROPERTY SURFACE	81.25 M2
COVERED TERRACE	5.25 M2
UNCOVERED TERRACE	2.4 M2
SOLARIUM	75 M2
PARKING SPACE	

Property information may be subject to errors and is not contractual. The surfaces expressed are approximate, being able to undergo modifications for technical reasons. Artistic Images Free Of Contractual Nature.

[www.euromarina.com](http://www.euromarina.com)

Urbanización Doña Pepa · Avda. Antonio Quesada, nº59 · 03170 Rojales (Alicante - España)





Marella Garden Ciudad Quesada

Lisa 2 2

Lisa

Marella Garden Ciudad Quesada 10 Alicante Torrevieja Alicante 35



	88.9 m <sup>2</sup>		2
	81.25 m <sup>2</sup>		2
	7.65 m <sup>2</sup>		2
Superficie pérgolas	16 m <sup>2</sup>	Pérgolas	1
	m <sup>2</sup>		✓
	m <sup>2</sup>		1
	75 m <sup>2</sup>		✓
	m <sup>2</sup>		✓
			X
	A		

